

Abercrombie & Kent



HIGHLIGHTS DE
TANZANIA
2015

A DESTACAR

- Parques de Ngorongoro y Serengeti
- Interacción cultural con los Masais
- Incluidos los 4 Parques Nacionales del Norte de Tanzania
- Uso privado del vehículo y el mismo chofer guía desde el principio del itinerario

MAPADE TANZANIA



ESQUEMA DEL ITINERARIO

FECHA	DESCRIPCIÓN DÍA	ALOJAMIENTO	COMIDAS*
Día 1	Llegada a Arusha	BRONZE: The Arusha Hotel Hab Standard/Twin SILVER: The Arusha Hotel Hab Standard Twin GOLD: Arusha Coffee Lodge Hab Plantation Twin	
Día 2	Traslado por carretera a Ngorongoro	BRONZE: Ngorongoro Farm House Hab Standard Twin SILVER: Ngorongoro Sopa Lodge Hab Standard Twin GOLD: The Manor at Ngorongoro Hab Standard Twin	D - A - C
Día 3	Cráter Ngorongoro Safari	BRONZE: Ngorongoro Farm House Hab Standard Twin SILVER: Ngorongoro Sopa Lodge Hab Standard Twin GOLD: The Manor at Ngorongoro Hab Standard Twin	D - A - C
Día4	Traslado por carretera a Serengeti Safari por la tarde	BRONZE: Serengeti Kati Kati Tented Camp Hab Standard Twin SILVER: Serengeti Sopa Lodge Hab Standard Twin GOLD: Serengeti Pioneer Camp Hab Standard Twin	D - A - C
Day 5	Serengeti Safari por la mañana y por la tarde	BRONZE: Serengeti Kati Kati Tented Camp Hab Standard Twin SILVER: Serengeti Sopa Lodge Hab Standard Twin GOLD: Serengeti Pioneer Camp Hab Standard Twin	D - A - C
Día6	Traslado por carretera a Lago Manyara Safari por la tarde	BRONZE: Tloma Lodge Hab Standard Twin SILVER: Kirurumu Manyara Lodge (Tented Lodge) Hab Standard Twin GOLD: Escarpment Luxury Lodge Hab Standard Twin	D-A-C

Día7	Traslado por carretera a Tarangire. Safari por la tarde	BRONZE: Maramboi Tented Camp Hab Standard Twin SILVER: Tarangire Sopa Lodge Hab Standard Twin GOLD: Tarangire Tree Tops Hab Standard Twin	D - A - C
Día8	Traslado al aeropuerto de Kilimanjaro.		D - A -

*D= Desayuno; A= Almuerzo; C= Cena

Solicite los mejores precios disponibles a IMS-Abercrombie & Kent

Por Tel: +34 93 215 5910 o por E-mail: ims@imsdestinos.com

Alojamientos:

GOLD:

- The Arusha Coffee Lodge en Arusha, Hab Standard, Alojamiento y Desayuno
- The Manor en Ngorongoro, Hab Standard – Pensión Completa
- Pioneer's Camp en Serengeti, Hab Standard – Pensión Completa
- Escarpment Luxury Lodge en Lago Manyara, Hab Standard – Pensión Completa
- Tarangire Treetops en Tarangire, Hab Standard – Pensión Completa
- Tipo de Vehículo: 4X4 landcruiser durante el safari

SILVER:

- The Arusha Hotel en Arusha, Hab Standard, Alojamiento y Desayuno
- Ngorongoro Sopa en Ngorongoro, Hab Standard – Pensión Completa
- Serengeti Sopa en Serengeti, Hab Standard – Pensión Completa
- Kirurumu Manyara Lodge en Lago Manyara, Hab Standard – Pensión Completa
- Tarangire Sopa en Tarangire, Hab Standard – Pensión Completa
- Tipo de Vehículo: 4X4 landcruiser durante el safari

BRONZE:

- The Arusha Hotel en Arusha, Hab Standard, Alojamiento y Desayuno
- Ngorongoro Farm House en Ngorongoro, Hab Standard – Pensión Completa
- Serengeti Kati Kati en Serengeti, Tienda Standard – Pensión Completa
- Tloma Lodge en Tarangire, Hab Standard – Pensión completa
- Maramboi Tented Camp en Tarangire, Hab Standard – Pensión Completa
- Tipo de Vehículo: 4X4 landcruiser durante el safari

El itinerario incluye:

- Alojamiento y comidas como indica el itinerario
- Safaris con chofer – guía de habla española
- Visita a un poblado Maasai
- 1 litro de agua por persona por día en el vehículo
- Costes de Parques y Áreas de Conservación
- Tasas Gubernamentales – sujeto a cambio en caso de incremento de tasas por parte del gobierno, compañía aéreas o proveedores (gasolina, ...)

El itinerario no incluye:

- Vuelos internacionales
- Tasas de Salida Internacionales
- Visita a la Garganta de Olduvai
- Flying Doctors; USD \$35 por persona para safaris en los parques del Norte con una duración inferior a 14 días, USD \$50 por persona para safaris de más de 14 días para los parques del Norte y para safaris en los parques del Sur y en Zanzíbar (el servicio es solo la evacuación a Nairobi pero no cubre ningún gasto médico)
- Propinas
- Visado (actualmente USD 50 por persona)
- Cualquier gasto de índole personal, tales como bebidas, lavandería, teléfono, ...

Por favor tome nota...

- Precios y disponibilidad a reconfirmar en el momento de realizar la reserva
- Alojamiento sujeto a disponibilidad, a no ser que se diga lo contrario
- Billetes aéreos sujetos a cambio hasta la emisión de los mismos
- Costes netos y no comisionables
- Si el pago es mediante tarjeta de crédito, es necesario sumar un 5% si el pago es con visa, y un 5,8% si es con American Express
- No hay ninguna reserva confirmada a no ser que se diga lo contrario
- Horarios de los vuelos sujetos a cambio
- El contenido y orden de las actividades del programa están sujetas a cambio por la dirección del lodge sin previo aviso. Pueden ser modificadas debido a las condiciones climáticas y al movimiento de los animales en los safaris.
- Tenga en cuenta que todos los participantes conozcan el riesgo de coger malaria y que tomen las medidas necesarias (consultar con su médico de cabecera)
- Durante los safaris a primera hora de la mañana, puede hacer frío. Recomendamos llevar una chaqueta impermeable.
- Durante el día puede hacer mucho calor. Recomendamos llevar sombrero, protector solar, gafas de sol, así como binoculares y cámara de fotos.
- Hay que tener en cuenta que durante los safaris, los vehículos van por terrenos desnivelados y con baches, por lo que no recomendamos este circuito para personas con problemas de espalda.
- Por favor, consulte con su embajada para la obtención del visado.
- Es necesaria la vacuna contra la Fiebre Amarilla.
- Sólo se permite una maleta blanda de 15 kgs en las avionetas

Día 1
Llegada Arusha

Llegada al Aeropuerto Internacional Kilimanjaro, y traslado al hotel en el centro de la ciudad (1 hora aprox).



Gold: Arusha Coffee Lodge Plantation Room Double/Twin **1 noche**
Silver: The Arusha Hotel Standard Room Twin
Bronze: The Arusha Hotel Standard Room Twin

Día 2
Arusha – Ngorongoro por carretera

D – A – C

Mañana libre y almuerzo en el hotel o tipo picnic en ruta. Traslado desde Arusha a Karatu (2 horas y media aproximadamente).

Los Masais son gentes medio nómadas, y una de las tribus más reconocidas del este de África con sus rojos “shukas” y sus elaborados abalorios. Visita de una tribu Masai y encuentro con el hombre más anciano del poblado quién le explicará como viven los Masais y cómo su cultura se ha mantenido también durante siglos aún en nuestro cambiante mundo.



Gold: The Manor at Ngorongoro Standard Room Twin
Silver: Ngorongoro Sopa Lodge Standard Room Twin
Bronze: Ngorongoro Farm House Standard Room Twin

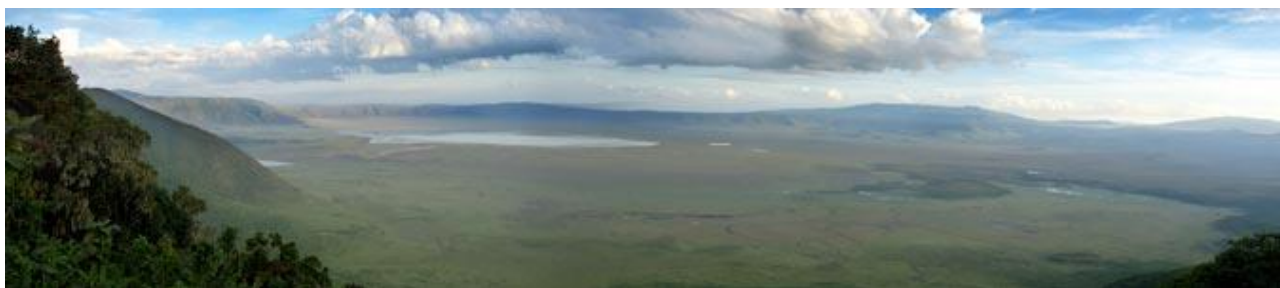
2 noches

Day 3
Ngorongoro Crater

D – A – C

Esta mañana, tras el desayuno, salida hacia el Cráter de Ngorongoro donde descenderemos al interior del cráter en los vehículos 4 x 4. Rastreamos y fotografiaremos los animales antes de disfrutar del picnic para el almuerzo con los hipopótamos y los pájaros.

El área de conservación del Ngorongoro se extiende sobre 8,292km² albergando diferentes hábitats desde praderas a bosques de montañas. Declarado patrimonio por la UNESCO, algunos lo consideran como la octava maravilla natural del mundo. Sus más de 25,000 animales censados en el interior del cráter aúnan el espectáculo de un paisaje inmemorial a una segura observación de animales de diversas especies durante su visita. Justo a la salida del cráter, los Masais vigilan su ganado y sus cabras mientras pastan viviendo sus vidas como lo han hecho durante siglos.





Gold: The Manor at Ngorongoro Standard Room Twin
Silver: Ngorongoro Sopa Lodge Standard Room Twin
Bronze: Ngorongoro Farm House Standard Room Twin

Día 4
Ngorongoro – Serengeti por carretera

D – A – C

Desayuno en el lodge antes de salir por carretera, descendiendo las laderas del cráter del Ngorongoro, hacia las llanuras del Serengeti. Llegada al lodge entre 4-5 horas más tarde aproximadamente.

Almuerzo en el lodge.

Por la tarde, safari fotográfico por las llanuras del Serengeti. Cuando la luz del día empiece a desvanecerse, regreso al lodge para disfrutar de la cena.



El Serengeti, Patrimonio Mundial de la Humanidad. Conocido como Siringitu por los Maasai que habitan estas tierras desde hace milenios, su nombre significa la tierra sin fin. Siendo uno de los ecosistemas más antiguos de la tierra, es quizá conocido principalmente por la Gran Migración que tiene lugar desde Octubre a Junio en este parque, dependiendo de las lluvias, así como los masivos nacimientos de ñus que tienen lugar anualmente en el sur del Serengeti sobre el mes de Febrero/Marzo.

Pero Serengeti es más. Es el latido constante de la vida en total libertad. Serengeti es la joya de la corona en Tanzania, y junto con el Parque Nacional de Maasai Mara en su sector Keniano conservan la mayor y más rica concentración de animales terrestres salvajes en la tierra en grandes espacios abiertos bajo cielos de azul profundo, salpicados de nubes blancas, Serengeti es sus amaneceres frescos y despejados y sus bellos atardeceres de fuego.



El Serengeti es sin duda el más famoso parque nacional en el mundo y acoge la mayor migración animal anual de ñus, cebras y gacelas.

Gold: Serengeti Pioneer Camp Standard Room Twin

2 noches

Silver: Serengeti Sopa Lodge Standard Room Twin

Bronze: Serengeti Kati Kati Tented Camp Standard Room Twin

Día 5

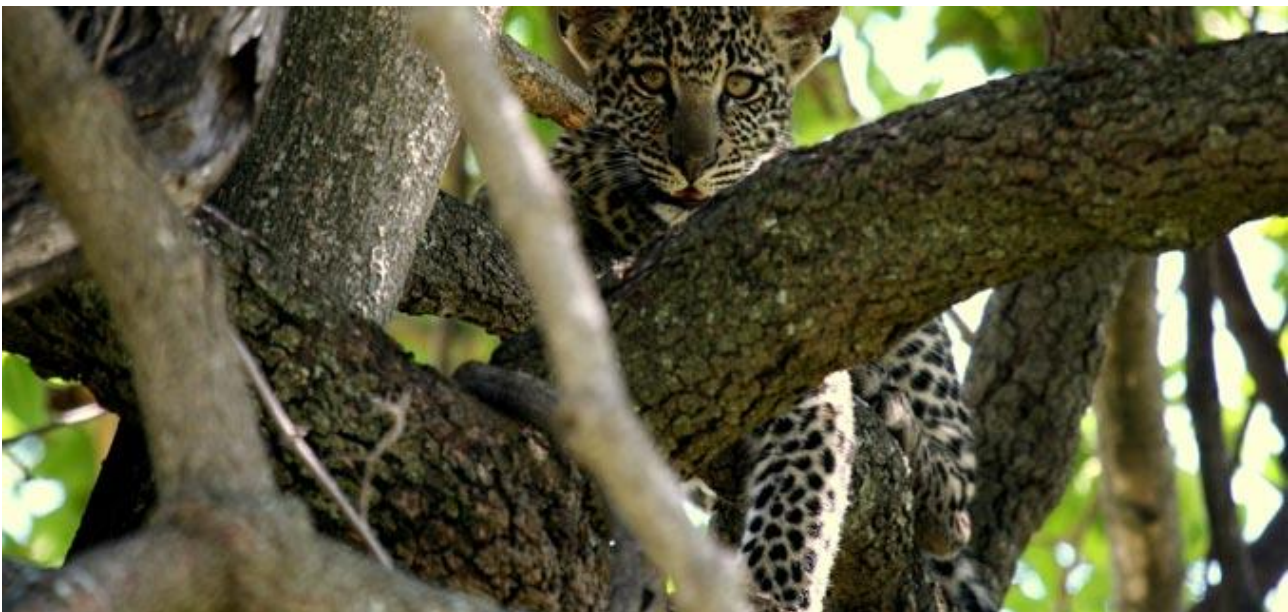
Día Completo en Serengeti

D – A – C

Desayuno en el lodge.

Pase el día explorando las extensas llanuras en busca de los grandes felinos y otros animales incluyendo gacelas Thomson, cebras y ñus.

Safaris por la mañana y por la tarde o si usted desea maximizar su tiempo de safari puede pasar un día completo de safari con almuerzo tipo picnic en lugar de regresar a la hora del almuerzo al lodge



Gold: Serengeti Pioneer Camp Standard Room Twin
Silver: Serengeti Sopa Lodge Standard Room Twin
Bronze: Serengeti Kati Kati Tented Camp Standard Room Twin

Día 6
Serengeti – Lago Manyara por carretera

D – A – C

Desayuno en el lodge antes de salir por carretera hacia Lago Manyara. Una vuelta alrededor del Lago Manyara le permitirá observar una densa población de monos, facocheros, ñus y búfalos antes de llegar a un claro que se asoma al lago.



Situado en el Valle del Rift, Lago Manyara es una gema escénica definida por Ernest Hemingway como “lo más precioso que he visto en Africa”. El Parque Nacional de Lago Manyara ofrece un microcosmos virtual de lo que es en sí la experiencia de un safari fotográfico en Tanzania. Ya desde la puerta de entrada, los caminos se asoman rodeados de una verdosa jungla con cientos de monos entre los ancianos árboles de mahogany. Más adelante, y contrastando con la intimidad del bosque, verá abiertos pastos alrededor del lago alcalino con azules picos volcánicos al fondo. Una población numerosa de búfalos, ñus, cebras se congrega en estos pastos, además de jirafas, algunas de coloración tan oscura que aparentan ser negras desde la distancia. Los bosques de acacias hacia el interior son hogar de los famosos leones trepadores y de elefantes de colmillos impresionantes, con riachuelos diseminados y manantiales de agua caliente cercanos ya a las orillas del lago en la parte sur del parque. Más de 400 especies de aves han sido catalogadas en Manyara, entre ellos los flamencos rosas con sus puntuales migraciones que han hecho famoso el parque.

Almuerzo en el lodge.

Por la tarde, safari en Lago Manyara.

Regreso al lodge para refrescarse antes de la cena

Gold: Escarpment Luxury Lodge Standard Room Twin **1 noche**
Silver: Kirurumu Manyara Lodge (Tented Lodge) Standard Room Twin
Bronze: Tloma Lodge Standard Room Twin

Día 7
Lago Manyara - Tarangire por carretera

D – A – C

Desayuno en el Camp antes de salir con dirección a Tarangire (aprox 1 hora y media), famoso por sus manadas de elefantes y sus pintorescos paisajes dotados con árboles baobab.

Almuerzo en el lodge.

Safari por la tarde explorando el Parque de Tarangire antes de regresar al lodge para cenar. Tarangire es uno de los parques del Norte de Tanzania más visitado con su densa población de animales de Julio a Noviembre, sólo superado por Serengeti. .

Tarangire o el jardín de los baobabs. El baobab, ese árbol conocido por el inmortal libro de El Principito y que tanta simbología tiene en muchas culturas africanas. Según la leyenda es el árbol que crece al revés para evitar ver la maldad y destrucción del hombre. El baobab es el protagonista de los bucólicos paisajes africanos con sombras de elefantes al atardecer. Y este paisaje es el impresionante encuadre del Parque Nacional de Tarangire.

Con su ecosistema que gira en torno al río Tarangire, se produce en este parque una pequeña migración de animales, que en época seca acuden desde las áreas de conservación con lindantes en busca de agua al río. Como vegetación numerosos árboles de ébano, caoba, tamarindos, acacias y palmeras de sabana, junto a los mencionados baobabs. Como habitantes más de 550 especies de aves, grandes manadas de elefantes, leones trepadores sólo posibles de ver en Tarangire y Manyara, jirafas, búfalos, leopardos, guepardos, impalas, cebras, etc junto al kudu menor, el orix y el antílope sable que sólo encontrará en este parque.



Gold: Tarangire Tree Tops Standard Room Twin
Silver: TarangireSopa Lodge Standard Room Twin
Bronze: Maramboi Tented Camp Standard Room Twin

1 noche

Día 8
Tarangire – Arusha por carretera

D – A

Desayuno en el lodge. Salida por carretera (2 horas aprox) con destino a Arusha.

Llegada a Arusha y almuerzo en el Hotel The Arusha.

Por la tarde, traslado al Aeropuerto de Kilimanjaro con asistencia para el check in en su vuelo de regreso a España.

Why Abercrombie & Kent?

Abercrombie & Kent is the world leader in luxury travel, combining comfort and authenticity in the world's greatest destinations. Company-wide there are certain values that make us special:

- **Global Corporate Indemnity Insurance** – providing you with unsurpassed peace of mind for wherever you travel within our network.
- **Quality Control teams** – each and every office of ours has a team assigned to making sure our suppliers always deliver as promised. Headed up centrally in London, you can be confident that we work together with international oversight.
- **Guides** – we use only the best guides in the world, who undergo strict qualification processes. They know our destinations inside and out, and serve as much as travelling companions as experts in their field.
- **Philanthropy** – Since 1982 we have been globally committed to respecting the natural environment and giving back to the local people whose destinations we host clients in. Internally and through the generosity of our guests we support over 37 different hand-picked projects worldwide.
- **24 hour emergency contact** – no matter what time of day or whatever the query, our local operations teams are always on standby to be of assistance, providing flexible measures if any plans change.
- **Health and safety** – we have stringent criteria that all our suppliers must meet, along with a whole host of safety initiatives tailored to each destination - from first aid training to localized emergency procedure plans.
- **Our relationships with suppliers** are second to none. It's these personal, long-standing local connections that make sure we offer the best product to our clients. Whether it's the most sought-after table in a restaurant or preferential upgrades where available at hotels, we hold the key to all your customer's needs.
- **Our ability to tailor-make.** We handle every request according to individual needs, so you know we're always thinking about how our agent partners can offer the finest combinations each and every time.
- **VIP services and 'insider access'** – unique and exclusive moments from our wealth of interesting connections, means we can bring our guests closer to the real people, the culture and their customs. From meetings with renowned archaeologists to tea with a local market-seller's family, we can make it happen.

Abercrombie & Kent East Africa

For nearly 50 years, Abercrombie & Kent East Africa has created life changing experiences for travellers to this most beautiful, quintessential part of Africa. Our dedicated team of over 400 multilingual, highly experienced staff means that whether guests are looking to climb to the summit of Mt Kilimanjaro with our specialized climbing team, luxuriate on the pristine beaches of East Africa's Swahili coast, enjoy the big 5 in all their glorious ferocity or look deep into the expressive eyes of a mountain gorilla, Abercrombie & Kent can make it happen. We have a network of six offices in East Africa, our own fleet of specialized safari equipped vehicles and an exclusive private camping operation - allowing guests to experience the ultimate, most authentic form of safari in game-rich locations, region-wide. With extensive insider access opportunities we can open doors to prominent personalities in various fields including Jonathan Scott, Richard Leakey, Cynthia Moss and Alan Root. It's all of these factors combined that make us truly unique.

TERMS & CONDITIONS- Individual FIT Bookings

1. CONTRACTING PARTIES

These Terms and Conditions are legally binding between the traveller(s) and Abercrombie & Kent Tanzania, herein after referred to as A&K.

are at the owner's risk throughout the tour and A&K assumes no liability for lost or damaged baggage. Baggage insurance is strongly advised.

A&K cannot guarantee that all payment methods will be accepted and A&K will therefore advice of the most suitable payment method at the time of deposit.

2. ACCEPTANCE OF THESE TERMS

PLEASE NOTE: Acceptance of a quotation from A&K constitutes acceptance of these Terms and Conditions which take effect immediately.

Please check with your international carrier for other baggage restrictions applicable to your international flight.

15.1 For payment by credit card A&K reserve the right to charge a levy of up to 5.8%.

15.2 Please use the following account details for bank transfers:

3. ACCOMMODATION:

All accommodation, room type(s) and specification are as shown in the itinerary.

10. TAXES AND GRATUITIES:
Hotel taxes as imposed by city and state governments are included. Airport taxes are included where specified in the itinerary.

Account Name: *Abercrombie & Kent Tanzania Ltd*

Account Number: *014105002201*

Bank: *National Bank of Commerce, Arusha Branch*

Branch Code: *73-151-407*

Swift Code: *NLCBTZX*

Corresponding Bank Code: *CITIUS33 (Citibank N.A, New York, USA)*

4. MEALS:

Meals are as shown in the itinerary.

Gratuities for guides, drivers, porters, camp staff, ship crew and Tour Managers are not included and are at the discretion of the traveller.

11. PRICES & ARRANGEMENTS:

Transfers are provided on arrival and departure from airport to hotel and return only where specified in the itinerary.

The tour price includes planning, handling and operational charges and is quoted based on the current rates of exchange and tariffs. Entrance fees as part of scheduled sightseeing tours are also included in this price. This price is subject to revision in line with significant changes in foreign currency, tariff rates, taxes etc.

15.3 For payment by bank transfer please confirm with A&K by fax or email the date on which payment has been made.

15.4 Travellers are liable for all bank and related transaction charges.

6. ITINERARY:

Accommodation and arranged sightseeing are subject to change at any time due to unforeseen circumstances or circumstances beyond A&K's control. Every effort will be made to operate tours as planned, but alterations may occur after the final itinerary has been issued. A&K also reserves the right to withdraw a tour or any part of it, to make such alterations to the itinerary or the tour inclusions as it deems necessary or desirable, and to pass on to tour members any expenditures or losses caused by delays or events beyond its control.

12. EXCLUSIONS:

The cost of obtaining passports, visas, excess baggage charges, items of a personal nature such as drinks, laundry, telephone calls, fax charges and excess baggage charges unless expressly included in writing, are not included in the tour price.

16. CANCELLATION:

All cancellations must be received in writing.

16.1 Cancellations received between the date of booking and 61 days prior to departure will result in the loss of the deposit.

16.1.1 Cancellations received 60 - 46 days prior to departure will be subject to a cancellation charge of 15% of the tour price.

16.1.2 Cancellations received 45 - 29 days prior to departure will be subject to a cancellation charge of 25% of the tour price.

16.1.3 Cancellations received 28 - 15 days prior to departure will be subject to a cancellation charge of 50% of the tour price.

16.1.4 Cancellations received 14 days or less prior to departure will be subject to a forfeiture of the entire tour price.

16.2 Cancellation of airline tickets will be subject to the refund policy of each individual airline and may be greater than the percentages above particularly when low cost/net based fares are used.

16.3 The purchase of special event tickets is subject to the refund policy of each individual event. Please refer to the specific event policy for details.

16.4 A&K reserve the right to charge for financial penalties, fees and losses incurred as a result of cancellation.

7. SPECIAL REQUESTS:

Specific requests should be advised at time of booking. Please note that every effort will be made to secure special requests, however; they cannot be guaranteed.

13. PHOTOGRAPHY:

A&K reserves the right to take photographs during the operation of any program or part thereof and to use them for promotional purposes. By booking a program with A&K, travellers agree to allow their images to be used in such photographs. Travellers who prefer that their images not be used are asked to identify themselves to A&K prior to final payment and they will be exempted from this photography waiver clause.

14. REGISTRATION:

A non-refundable deposit of 25% is required at the time of booking. The remainder of the tour cost is payable 60 days prior to departure. If the reservation is made within 60 days of departure, the entire tour price must be paid at the time of confirmation.

8. TRANSPORTATION:

Transportation will be as specified in the itinerary.

15. PAYMENT METHOD:

Payments may be made by the following methods:

- Credit card
- Cheque
- Bank transfer

9. BAGGAGE:

A&K provides handling of baggage only as specified in the quotation. Weight restrictions for baggage on some routes on internal/domestic flights may apply; details of which will be provided with pre-tour documentation. Baggage and personal effects

17. CLAIMS AND REFUNDS:

Refunds are not made for any missed services, except for verifiable extenuating circumstances. Please see our LIMITS ON ABERCROMBIE & KENT'S RESPONSIBILITY clause below. For verifiable claims to be considered, they must be received in writing within 30 days of the termination of the program. Any adjustment considered will be based on the actual price of the services involved and not on a per diem basis. Adjustments will not be made for unused sightseeing trips or meals. A&K will not accept any liability for any claims that are not received within 30 days of the termination of your program. All claims for days missed while travelling should be made in writing within 30 days of the program.

18. LIMITS ON ABERCROMBIE & KENT'S RESPONSIBILITY:

[Insert legal entity name], its employees, shareholders, officers, directors, successors, agents and assigns (collectively A&K), does not own or operate any entity which is to or does provide goods or services for your trip with the exception of a limited number of vehicles. It purchases transportation (by aircraft, coach, train, vessel or otherwise), hotel and other lodging accommodations, restaurant, ground handling and other services from various independent suppliers (including from time to time other affiliated Abercrombie & Kent companies). All such persons and entities are independent contractors. As a result, A&K is not liable for any negligent or willful act of any such person or entity or of any third person.

In addition and without limitation, A&K is not responsible for any injury, financial or physical loss, death, inconvenience, delay or damage to personal property in connection to the provision of any goods or services whether resulting from but not limited to acts of God or force majeure, illness, disease, acts of war, civil unrest, insurrection or revolt, animals, strikes or other labor activities, criminal or terrorist activities of any kind, overbooking or downgrading of services, food poisoning, mechanical or other failure of aircraft or other means of transportation or for failure of any transport mechanism to arrive or depart on time.

There are many inherent risks in adventure travel of the type involved here, which can lead to illness, injury or even death. These risks are increased by the fact that these trips take place in remote locations, far from medical facilities. Passenger assumes all such risks associated with participating in this trip.

18.1 In the event of a cancellation or material alteration to the trip as a result of the circumstances as described in this clause A&K may in their sole and absolute discretion:

- a) offer the traveller(s) alternative travel arrangements or products of comparable standard as may be appropriate in the circumstances; or
- b) if alternative travel arrangements or products are not offered by A&K, A&K will make a prompt proportional refund of monies paid by the traveller.

18.2 A&K may charge a reasonable fee to cover the administration costs associated with providing alternative travel arrangements or products.

18.3 If a material alteration becomes necessary within 90 days of the departure date for any reason other than the circumstances described in this clause, A&K will endeavor to offer comparable products or a full refund of all monies paid by the traveller(s).

19. HEALTH PRECAUTIONS:

Please ensure that you consult your personal physician about anti malaria precautions and other inoculations and vaccinations before travel. Where applicable, please ensure that whilst travelling you carry a valid Yellow Fever certificate.

20. TRAVEL ADVISORIES/WARNINGS:

It is the responsibility of travellers to become informed about the most current travel advisories and warnings by referring to their respective government agencies. In the event of an active State Department or government agency Travel Warning against travel to specific destination location(s) of the trip, should the traveller still choose to travel, notwithstanding any travel advisory or warning, the traveller assumes all risk of personal injury, death or property damage that may arise out of the events like those advised or warned against.

21. TRAVELLERS' REPRESENTATIONS:

Traveller(s) represent(s) that neither he nor anyone traveling with him has any physical condition or disability that could create a hazard to himself or other members of the tour. A&K reserves the right to remove from the trip, at the sole expense of the traveller, anyone whose condition is such that he or she could create a hazard to himself or others, or otherwise impact the enjoyment of other passengers on the trip.

22. AIR TRANSPORTATION:

Airlines concerned are not to be held responsible for any act, omission or event occurring while passengers are not on board their aircraft. International air carriers are also subject to international air conventions limiting their liability. These limitations of liability are explained on the e-ticket or on the reverse of the airline ticket and when issued, this constitutes the sole contract between the respective air carrier(s) and their passengers.

23. PASSPORT & VISAS

Please note that passport holders are responsible for obtaining the required documentation applicable for entry. Please note also that passports must be valid for six (6) months before departure and should also have sufficient blank pages for visas and immigrations stamps. A&K cannot be held responsible should you be denied entry to a country due to non-compliance with these requirements.

24. TRAVEL INSURANCE:

A&K strongly recommend all clients take out comprehensive travel insurance prior to date of travel. This insurance should cover cancellation and curtailment, all medical expenses including evacuation/repatriation, personal baggage, personal liability, death and permanent disability and travel document insurance. A&K cannot be held responsible for any costs arising from such loss or injury.

25. ARBITRATION AGREEMENT:

Any claim arising out of or relating to these Terms and Conditions, to the Limits on A&K's Responsibility clause, to the brochure, to any information relating in any way to the trip, to the trip itself or to any products or services related to the trip, shall be settled in the first instance by binding arbitration in the applicable legal forum as detailed in clause 26 of these Terms and Conditions. In lieu of a personal appearance at arbitration the arbitration may be conducted by telephonic means. Arbitration is the exclusive forum in the first instance for dispute resolution and except as otherwise provided by statute, each party shall bear its own costs and expenses and an equal share of the arbitrator and administrative fees.

26. APPLICABLE LAW AND FORUM:

This agreement shall be construed, interpreted and enforced in accordance with, and shall be governed by the laws of [INSERT COUNTRY NAME]. It is agreed between A&K and the travellers that all lawsuits against A&K arising under, in connection with, or incidental to the tour shall be filed, if at all, in the courts of [INSERT COUNTRY NAME] to the exclusion of the courts of or in any other country or jurisdiction.